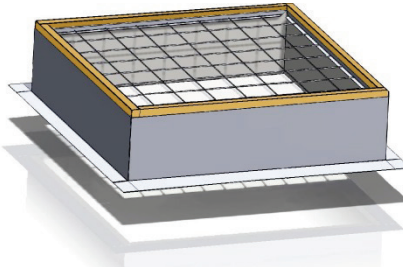


Gladiator

Metal Building Roof Curb

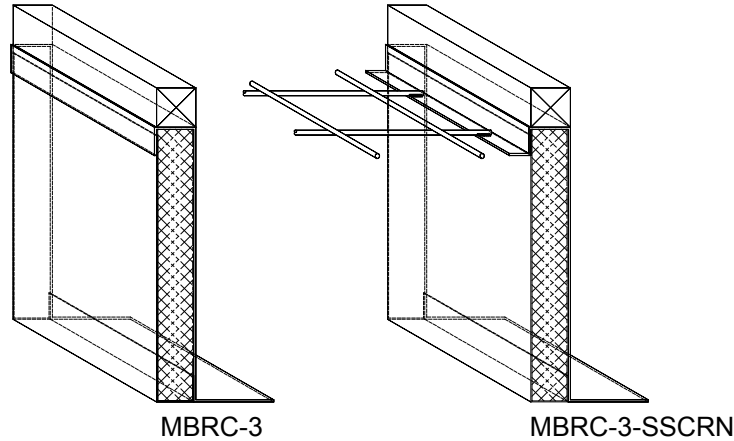


Model MBRC-3

Frame Material
Galvanized Steel

Metal Building Roof Curb

Details



Specifications

Gladiator Roof Curb shall be model No. _____. The metal building roof curb shall be constructed with 18-gauge galvanized steel and white painted. The curb is insulated with 1-1/2" 3# density fiberglass insulation and has a 2" x 2" pressure treated wood nailer on top. Full height mitered and welded corners. All welds are leak tested after fabrication. Optional Ø3/16" Safety Screen available in a 6" x 6" grid pattern (OSHA compliant per 29 CFR ss. 1910.23 & s. 1926.501). Safety Screen sits on and is welded to a 3/4" wide integrated galvanized steel shelf.

Sizes:

Model Number	Inside Curb Dimension*	Model Number	Inside Curb Dimension*	Model Number	Inside Curb Dimension*	Model Number	Inside Curb Dimension*
3737-MBRC-3	37" x 37"	9292-MBRC-3	92 1/2" x 92 1/2"	3037-MBRC-3	30 1/4" x 37"	4689-MBRC-3	46 1/4" x 89 1/2"
4242-MBRC-3	42" x 42"			3046-MBRC-3	30 1/4" x 46 1/4"	4872-MBRC-3	48" x 72"
4646-MBRC-3	46 1/4" x 46 1/4"			3069-MBRC-3	30 1/4" x 69 1/2"	4884-MBRC-3	48" x 84"
4848-MBRC-3	48" x 48"			3096-MBRC-3	30 1/4" x 96"	4896-MBRC-3	48" x 96"
5555-MBRC-3	55" x 55"			3496-MBRC-3	34" x 96"	5460-MBRC-3	54" x 60"
6060-MBRC-3	60" x 60"			3746-MBRC-3	37" x 46 1/4"	6072-MBRC-3	60" x 72"
7070-MBRC-3	70 1/4" x 70 1/4"			3775-MBRC-3	37" x 75"	6084-MBRC-3	60" x 84"
7575-MBRC-3	75" x 75"			3859-MBRC-3	38" x 59"	6096-MBRC-3	60" x 96"
8484-MBRC-3	84" x 84"			4669-MBRC-3	46 1/4" x 69 1/2"	Call for additional sizes	

U Factor = 0.16, R Value = 7.5

Features:

- 18-gauge galvanized steel with 20-gauge liner
- 1-1/2" thick 3# density fiberglass insulation
- 3" Integral mounting flange
- 2" x 2" Pressure treated wood nailer
- 20 Year limited warranty

Add highlighted suffixes to model number where applicable:
i.e. **4896-MBRC-3-SSCRN**

Options:

- 14-gauge galvanized steel (Structural) (**14G**)
- Ø3/16" Safety Screen with a 6" x 6" Grid Pattern (**SSCRN**)