

# Gladiator

## Structural Roof Curb

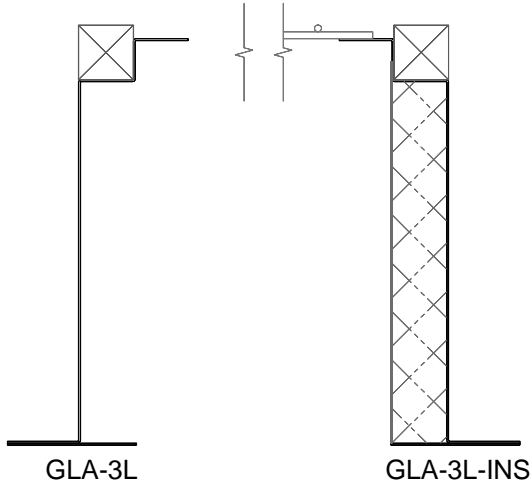


Structural Roof Curb

Model GLA-3L

**Frame Material**  
Galvanized Steel

Details (Scale: 2¼":1'-0")



Specifications

Gladiator Roof Curb shall be model No. \_\_\_\_\_ as manufactured by Bristolite Daylighting Systems, Santa Ana, Calif. The structural curb shall be constructed with 18-gauge stainless steel topped with 2" x 2" pressure treated nailers. The curb can be insulated with 1-1/2" thick 3# density rigid insulation and closed off with a 22-gauge galvaneal liner. Internal reinforcement by 12-gauge 1.5" x 1.5" angle on 24" O.C. on all curb sides 3' or more in length. All welds are micro-sealed and prime painted after fabrication. Optional Safety Screen available in a 4" x 4" grid pattern (OSHA compliant per 29 CFR ss. 1910.23 & s. 1926.501) with 5/32" cold rolled bars welded to structural curb or Security Grill in a 5" x 5", 5" x 16", 8" x 8" grid pattern or 5" parallel pattern with 1/2" cold rolled bars (4" x 4" grid pattern with 1/4" cold rolled bars) welded to structural curb.

### Sizes:

Model Number	Inside Curb Dimension	Model Number	Inside Curb Dimension	Model Number	Inside Curb Dimension	Model Number	Inside Curb Dimension
3737-GLA-3L	37" x 37"	9292-GLA-3L	92 1/2" x 92 1/2"	3037-GLA-3L	30 1/4" x 37"	4669-GLA-3L	46 1/4" x 69 1/2"
4242-GLA-3L	42" x 42"			3046-GLA-3L	30 1/4" x 46 1/4"	4689-GLA-3L	46 1/4" x 89 1/2"
4646-GLA-3L	46 1/4" x 46 1/4"			3069-GLA-3L	30 1/4" x 69 1/2"	4872-GLA-3L	48" x 72"
4848-GLA-3L	48" x 48"			3096-GLA-3L	30 1/4" x 96"	4896-GLA-3L	48" x 96"
5555-GLA-3L	55" x 55"			3496-GLA-3L	34" x 96"	48120-GLA-3L	48" x 120"
6060-GLA-3L	60" x 60"			36120-GLA-3L	36" x 120"	5460-GLA-3L	54" x 60"
7070-GLA-3L	70 1/4" x 70 1/4"			3746-GLA-3L	37" x 46 1/4"	6072-GLA-3L	60" x 72"
7575-GLA-3L	75" x 75"			3775-GLA-3L	37" x 75"		
8484-GLA-3L	84" x 84"			3859-GLA-3L	38" x 59"		

U Factor = 0.15, R Value = 6.5

### Features:

1. 18-gauge ASTM A653 G90 hot-dipped galvanized steel
2. Internal reinforcement on all curb sides 3' or more in length
3. Corners mitered, welded, micro-sealed and primer painted
4. 2" Integral mounting flange.

### Options:

1. 2" x 2" Pressure Treated Wood Nailer
2. 1.5" thick, 3lbs Density, Fiberglass Insulation
3. 22-gauge Galvanized Liner
4. Safety Screen with 5/32" Cold Rolled Bars in 4" x 4" Grid Pattern
5. Security Grill with 1/2" Cold Rolled Bars in 5" x 5" Grid Pattern
6. Inside Curb White Enamel Paint