

Energy Star Smoke Hatch

Industrial Smoke Hatch and
(Optional) Security Grill



Fiberglass Dome

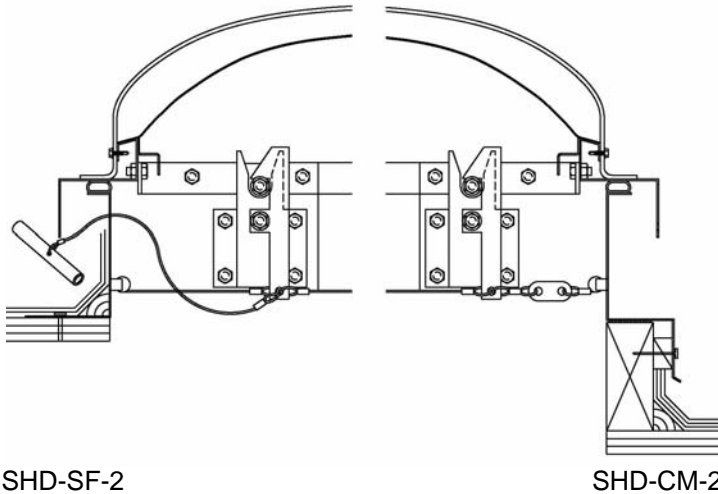
Model SHD

Frame Material
Aluminum

Bristolite fiberglass glazing has been load tested and complies with OSHA – CFR's for fall protection.

Details (Scale: 2":1'-4")

Specifications



Energy Star Smoke Hatch shall be model No. _____ as manufactured by Bristolite Daylighting Systems, Santa Ana, CA. The fiberglass dome shall be a molded one piece unit with integral counter flashing skirt to eliminate any dependence on gaskets, sealants or flow through designs. The Fiberglass shall consist of neopentyl glycol isophthalic gelcoat laminate with an acrylic modified polyester based resin and silane glass fiber. The dome is attached to an openable frame, which in turn is attached to the base frame with a hinge. This frame is compression loaded by torsion springs and secured on the opposite side with latches operated either manually, or by UL/FM listed fusible links. All frames to be fully welded for water tight integrity. The frame is to have an integral condensation channel to carry moisture to the exterior. The dome retaining fasteners are to be corrosion resistant. The base frame is fabricated of 6063-T5 hellarc welded aluminum and shall be installed either on a 1-1/2" wide curb furnished by others or on its own 4", 9", or 12" high self flashing curb fabricated from aluminum with a 2-3/4" roof flange. Materials are to be self extinguishing Approved Plastic CC-1 Rated. Materials tested in conformance with FM 4431 including 2" severe hail test.

Sizes:

Model Number	Inside Curb Dimension	Model Number	Inside Curb Dimension	Model Number	Inside Curb Dimension	Model Number	Inside Curb Dimension
4848-SHD	48" x 48"			4896-SHD	48" x 96"		
				6072-SHD	60" x 72"		

Solar Heat Gain Coefficient = .46, U Factor = .63, Visible Light Transmission = 63% (Typical for ESA double glazed units)

Features:

1. Curb Mounted (CM) or Self Flashing (SF)
2. Energy Star Glazing (ESA)
3. Exterior and/or Interior Manual Releases (M1, M2 or M3)
4. Fusible Link Temperatures: 165°, 212°, 286°, 360° or 520°
5. High Wind Resistant – Can withstand high wind conditions
Add highlighted suffixes to model number where applicable:
i.e. 4896-SHD-CM-2-ESA-M2

Options:

1. Insulating Double Domes (2) or Single Dome (1)
2. Polycarbonate Dome (PC) (inner dome only)
3. Self Flashing Bases of 9" or 12" (9 or 12)
4. Insulated Frame (INS)

Options: (cont.)

5. Double Wall Frame (DW)

Accessories: See PDS (Product Data Sheets) for these Items

1. Gladiator
 - a. Structural Curb (SC)
 - b. Security Grills (SG)
 - c. Safety Screens (SSCRN)
2. Quickkit (Installation Kits)
 - a. Stainless Steel (QKSS)
 - b. Zinc Plated (QKZP)