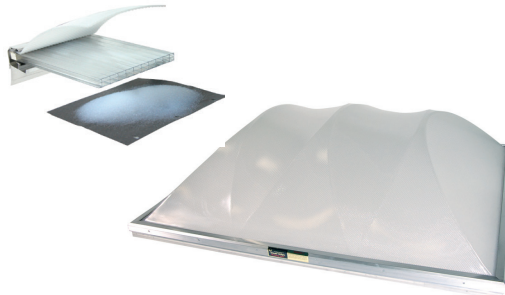


Nano Insulgel

Super Insulating Silica Aerogel

Industrial Skylight

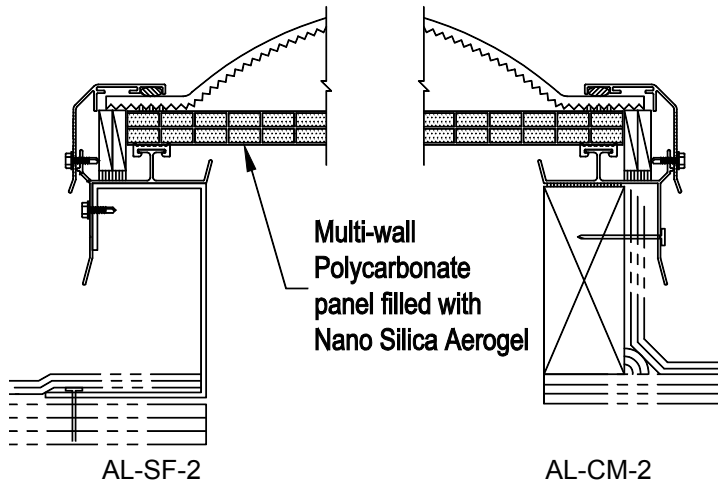


Prismatic Triarch

Model AL

Frame Material: Aluminum
NFRC: Certified
IECC 2015: Meets without controls all climate zones
OSHA: Meets CFR fall regulations
AAMA: WDMA/CSA 101/I.S.2/A440-08 & WDMA/CSA 101/I.S.2/A440-05

Details:



Specifications:

Nano Insulgel skylight shall be model No. _____ as manufactured by Bristolite Daylighting Systems, Santa Ana, CA. Skylights shall be fully factory assembled consisting of a plastic dome using prismatic material with a CC-2 classification plus a structural polycarbonate panel filled with nano silica aerogel that is sealed by interior and exterior gaskets to a 6063-T5 heliarc welded aluminum frame and has an integral condensate channel to carry moisture to the exterior. The aluminum retaining cap fasteners are to be corrosive resistant. The skylight shall be installed either on a 1-1/2" wide curb furnished by others or on its own 4", 9" or 12" high self flashing curb fabricated from aluminum with a 2-3/4" roof flange.

Sizes:

Model Number	Inside Curb Dimension	Model Number	Inside Curb Dimension	Model Number	Inside Curb Dimension	Model Number	Inside Curb Dimension
1414-AL	14 1/4" x 14 1/4"	6060-AL	60" x 60"	2448-AL	24" x 48"	3775-AL	37" x 75"
1919-AL	19" x 19"			2496-AL	24" x 96"	3859-AL	38" x 59"
2222-AL	22 1/4" x 22 1/4"	1422-AL	14 1/4" x 22 1/4"	3037-AL	30 1/4" x 37"	4669-AL	46 1/4" x 69 1/2"
3030-AL	30 1/4" x 30 1/4"	1446-AL	14 1/4" x 46 1/4"	3046-AL	30 1/4" x 46 1/4"	4689-AL	46 1/4" x 89 1/2"
3737-AL	37" x 37"	2230-AL	22 1/4" x 30 1/4"	3069-AL	30 1/4" x 69 1/2"	4884-AL	48" x 84"
4242-AL	42" x 42"	2237-AL	22 1/4" x 37"	3096-AL	30 1/4" x 96"	4896-AL	48" x 96"
4646-AL	46 1/4" x 46 1/4"	2246-AL	22 1/4" x 46 1/4"	3496-AL	34" x 96"	5460-AL	54" x 60"
4848-AL	48" x 48"	2272-AL	22 1/4" x 72"	3696-AL	36" x 96"	6072-AL	60" x 72"
5555-AL	55" x 55"	2296-AL	22 1/4" x 96"	3746-AL	37" x 46 1/4"		Call for additional sizes

Solar Heat Gain Coefficient = .31, U Factor = .37, Visible Light Transmission = 48% (Typical for CM-CPM-CNANO double glazed units)

Features:

- Curb Mounted (**CM**) or Self Flashing (**SF**)
- Two Prismatic Color Choices: White Prismatic Acrylic (**WPM**) or Clear Prismatic Acrylic (**CPM**)
- Nano Insulgel Panel Thickness: **10mm, 16mm, 20mm & 25mm**
Add highlighted suffixes to model number where applicable:
i.e. **4242-AL-CMT-2-CPM-16mm-CNANO-MF-SSCRN**

Options:

- Insulating Double Domes (**2**)
- Pyramid (**P**) or Double Hip (**DH**) Shaped Dome (selected sizes)
- Low Profile Dome (**LP**) (selected sizes)
- Frame Finish - Bronze Anodize (**BA**), Clear Anodize (**CA**), White Painted (**WP**) or Mill Finish (**MF**)
- EPDM Curb Seal Tape (**CMT**)

Accessories: See PDS (Product Data Sheets) for these Items

- Gladiator
 - Structural Curb (**SC**)
 - Security Grills (**SG**)
 - Safety Screens (**SSCRN**)
 - External Safety Cages (**SCAGE**)
- Quickkit (Installation Kits)
 - Stainless Steel (**QKSS**)
 - Zinc Plated (**QKZP**)