

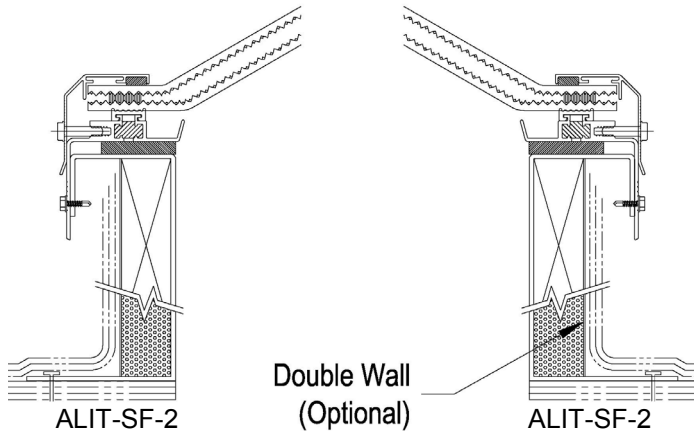


Industrial Skylight Thermally
Broken and (**Optional**)
Security Grill

Prismatic Pyramid Dome

Details (Scale: 3":1'-0")

Specifications



Quasar Skylight shall be model No. _____ as manufactured by Bristolite Daylighting Systems, Santa Ana, CA. The skylight shall be fully factory assembled consisting of a plastic pyramid dome using prismatic material with a CC-2 classification that is sealed by interior and exterior gaskets to a 6063-T5 heliarc welded aluminum frame fabricated of aluminum and polyurethane thermal break material to prevent thermal losses through the frame and the formation of condensation on its interior surfaces. The frame is to have an integral condensation channel. The aluminum retaining cap fasteners are to be corrosive resistant. The base frame shall be either a 4", 9", or 12" high self flashing curb, welded to the thermally broken frame, fabricated from aluminum with a 2-3/4" roof flange with 1" of insulation and an additional aluminum liner on the exterior of the self flashing frame. Standard slope of a pyramid dome to be 30° rise.

Sizes:

Model Number	Inside Curb Dimension	Model Number	Inside Curb Dimension	Model Number	Inside Curb Dimension	Model Number	Inside Curb Dimension
1414-ALIT	14 1/4" x 14 1/4"	4242-ALIT	42" x 42"	2246-ALIT	22 1/4" x 46 1/4"	4669-ALIT	46 1/4" x 69 1/2"
1919-ALIT	19" x 19"	4646-ALIT	46 1/4" x 46 1/4"	2272-ALIT	22 1/4" x 72"	4896-ALIT	48" x 96"
2222-ALIT	22 1/4" x 22 1/4"	4848-ALIT	48" x 48"	3046-ALIT	30 1/4" x 46 1/4"		
3030-ALIT	30 1/4" x 30 1/4"	5555-ALIT	55" x 55"	3069-ALIT	30 1/4" x 69 1/2"		
3737-ALIT	37" x 37"	6060-ALIT	60" x 60"	3746-ALIT	37" x 46 1/4"		

Solar Heat Gain Coefficient = .50, U Factor = .57, Visible Light Transmission = 70% (Typical for WPM double glazed units)

Features:

1. Welded Self Flashing (**SF**)
2. Prismatic Pyramid Dome(s) (**P**)
3. Two Prismatic Color Choices: White Prismatic Acrylic (**WPM**) or Clear Prismatic Acrylic (**CPM**)
4. Insulated Frame (**INS**)
5. Wood Nailer (**WN**)

Add highlighted suffixes to model number where applicable:
i.e. **6072-ALIT-SF-2-CPM-WPM-P-P-12-INS-DW-MF**

Accessories: See PDS (Product Data Sheets) for these Items

1. Gladiator
 - a. Security Grills (**SG**)
 - b. Safety Screens (**SSCRN**)
 - c. External Safety Cages (**SCAGE**)
2. Quickkit (Installation Kits)
 - a. Stainless Steel (**QKSS**)
 - b. Zinc Plated (**QKZP**)

Options:

1. Insulating Double Domes (**2**) or Single Dome (**1**)
2. Dome or Double Hip (**DH**) Shaped Dome (selected sizes)
3. Low Profile Dome (**LP**) (selected sizes)
4. Frame Finish - Bronze Anodize (**BA**), Clear Anodize (**CA**), White Painted (**WP**) or Mill Finish (**MF**)
5. Self Flashing Bases of 9" or 12" (**9** or **12**)
6. Double Wall (**DW**)