

# Quasar LowE

## Solar Heat Blocker Glazing & Super Insulator Silica Aerogel



### Model ALIB

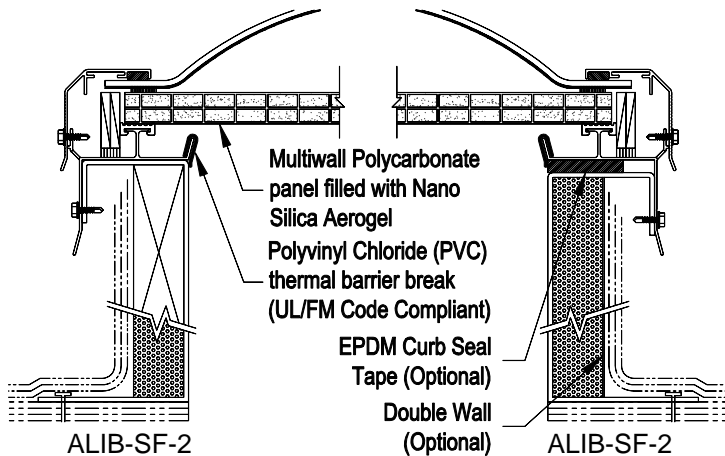
Industrial Skylight  
w/Thermal Barrier Break



Acrylic/Polycarbonate Dome

**Frame Material:** Aluminum  
**NFRC:** Certified  
**IECC 2015:** Meets without controls all climate zones  
**OSHA:** Meets CFR fall regulations  
**AAMA:** WDMA/CSA 101/I.S.2/A440-08 & WDMA/CSA 101/I.S.2/A440-05

#### Details:



#### Specifications

Quasar LowE skylight shall be model No. \_\_\_\_\_ as manufactured by Bristolite Daylighting Systems, Santa Ana, CA. The skylight shall be glazed with a plastic dome using acrylic or polycarbonate material covered with a specially formulated infrared and ultraviolet light reflecting coating plus a structural polycarbonate panel filled with nano silica aerogel to a 6063-T5 heliarc welded aluminum frame fabricated of aluminum with a polyvinyl chloride (PVC) thermal barrier break (UL/FM Code Compliant) to prevent thermal losses through the frame and the formation of condensation on its interior surfaces. The frame is to have an integral condensation channel to carry moisture to the exterior. The aluminum retaining cap fasteners are to be corrosive resistant. The skylight frame shall be installed on its own 9" or 12" high self flashing curb fabricated from aluminum with a 2-3/4" roof nailing flange. The base is made up with 1" insulation and a wood nailer and/or an additional aluminum liner on the exterior of the self flashing curb.

#### Sizes:

Model Number	Inside Curb Dimension	Model Number	Inside Curb Dimension	Model Number	Inside Curb Dimension	Model Number	Inside Curb Dimension
1414-ALIB	14 1/4" x 14 1/4"	6060-ALIB	60" x 60"	2448-ALIB	24" x 48"	3775-ALIB	30 1/4" x 96"
1919-ALIB	19" x 19"			2496-ALIB	24" x 96"	3859-ALIB	34" x 96"
2222-ALIB	22 1/4" x 22 1/4"	1422-ALIB	14 1/4" x 22 1/4"	3037-ALIB	30 1/4" x 37"	4669-ALIB	36" x 96"
3030-ALIB	30 1/4" x 30 1/4"	1446-ALIB	14 1/4" x 46 1/4"	3046-ALIB	30 1/4" x 46 1/4"	4689-ALIB	37" x 46 1/4"
3737-ALIB	37" x 37"	2230-ALIB	22 1/4" x 30 1/4"	3069-ALIB	30 1/4" x 69 1/2"	4884-ALIB	37" x 75"
4242-ALIB	42" x 42"	2237-ALIB	22 1/4" x 37"	3096-ALIB	30 1/4" x 96"	4896-ALIB	38" x 59"
4646-ALIB	46 1/4" x 46 1/4"	2246-ALIB	22 1/4" x 46 1/4"	3496-ALIB	34" x 96"	5460-ALIB	46 1/4" x 69 1/2"
4848-ALIB	48" x 48"	2272-ALIB	22 1/4" x 72"	3696-ALIB	36" x 96"	6072-ALIB	46 1/4" x 89 1/2"
5555-ALIB	55" x 55"	2296-ALIB	22 1/4" x 96"	3746-ALIB	37" x 46 1/4"		Call for additional sizes

Solar Heat Gain Coefficient = .24, U Factor = .31, Visible Light Transmission = 49% (Typical for ACO double glazed units)

#### Features:

1. Self Flashing (SF)
2. Acrylic Coollite (ACO) or Polycarbonate Coollite (PCO)
3. Insulated Curb (INS)
4. Wood Nailer (WN)

Add highlighted suffixes to model number where applicable:  
i.e. 4896-ALIB-SF-2-ACO-16mm-NANO-9-INS-DW-MF

#### Options:

1. Insulating Double Domes (2)
2. Low Profile Dome (selected sizes) (LP)
3. Frame Finish - Bronze Anodize (BA), Clear Anodize (CA), White Painted (WP) or Mill Finish (MF)
4. Self Flashing Bases of 9" or 12" (9 or 12)
5. Aluminum Double Wall (DW)

#### Options: (cont.)

6. EPDM Curb Seal Tape
7. Nano Insulgel Panel Thickness: 10mm, 16mm, 20mm & 25mm

Accessories: See PDS (Product Data Sheets) for these Items

1. Gladiator
  - a. Security Grills (SG)
  - b. Safety Screens (SSCRN)
  - c. External Safety Cages (SCAGE)