

# Thermoweld Acrylic

Manual Openable  
Residential Skyhatch

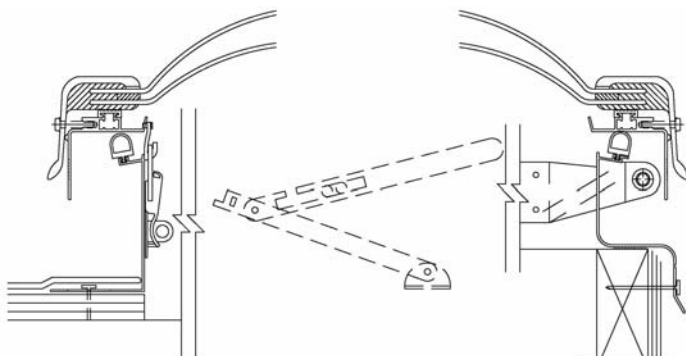


Acrylic Dome

Model AS-SKH

Frame Material  
Fiberglass / Aluminum

Details (Scale: 2":1'-0")



AS-SKH-SF-2

AS-SKH-CM-2

Specifications

Thermoweld Skylight shall be model No. \_\_\_\_\_ as manufactured by Bristolite Daylighting Systems, Santa Ana, CA. Skyhatches shall be fully factory assembled consisting of acrylic glazing with a CC-2 classification that shall be fused to its own counter flashing fiberglass skirt through the Thermoweld process which, in turn is attached to a thermally broken aluminum frame. The openable frame is hinged on the long side of the base frame with a pivot hinge and locking arms to hold the dome open 90°. An interior hasp with padlock provision shall be provided for security. The base frame shall be 6063-T5 heliarc welded aluminum. All units have insect screens and full perimeter gasketing around the base. The base frame shall be installed either on a 1-1/2" wide curb furnished by others or on its own 4", 9", or 12" high self flashing curb fabricated from aluminum with a 2-3/4" roof flange.

Sizes:

Model Number	Inside Curb Dimension	Model Number	Inside Curb Dimension	Model Number	Inside Curb Dimension	Model Number	Inside Curb Dimension
1414-AS-SKH	14 1/4" x 14 1/4"			1422-AS-SKH	14 1/4" x 22 1/4"		
1919-AS-SKH	19" x 19"			1446-AS-SKH	14 1/4" x 46 1/4"		
2222-AS-SKH	22 1/4" x 22 1/4"			2230-AS-SKH	22 1/4" x 30 1/4"		
3030-AS-SKH	30 1/4" x 30 1/4"			2237-AS-SKH	22 1/4" x 37"		
3737-AS-SKH	37" x 37"			2246-AS-SKH	22 1/4" x 46 1/4"		
4242-AS-SKH	42" x 42"			3037-AS-SKH	30 1/4" x 37"		
				3046-AS-SKH	30 1/4" x 46 1/4"		
				3746-AS-SKH	37" x 46 1/4"		

Solar Heat Gain Coefficient = .50, U Factor = .56, Visible Light Transmission = 53% (Typical for WTM double glazed units)

Features:

1. Curb Mounted (CM) or Self Flashing (SF)
2. Four Acrylic Color Choices: Medium White (WTM), Bronze (BT), Grey (GT) or Clear (CC)
3. Standard Bronze Color Fiberglass Frame Finish  
Add highlighted suffixes to model number where applicable:  
i.e. 4242-AS-SKH-CM-2-BT-BA

Options:

1. Insulating Double Domes (2) or Single Dome (1)
2. Pyramid (P) or Double Hip (DH) Shaped Dome (selected sizes)
3. Polycarbonate Dome (PC) (inner dome only)
4. Low Profile Dome (LP) (selected sizes)

Options: (cont.)

5. Impact Modified Prismatic Acrylic Glazing (WPM/CPM) (inner dome only) Up to and including 4896 and 6072, no larger
6. Base Frame Finish (self flashing only) – Bronze Anodize (BA), Clear Anodize (CA), White Painted (WP) or Mill Finish (MF)
7. Fiberglass Frame Finish – White Gel (WGEL)
8. Self Flashing Bases of 9" or 12" (9 or 12)
9. Insulated Frame (INS)
10. Units Hinged on Short Side as Standard. Long Side By Request

Accessories: See PDS (Product Data Sheets) for these Items

1. Quickkit (Installation Kits)
  - a. Stainless Steel (QKSS)
  - b. Zinc Plated (QKZP)