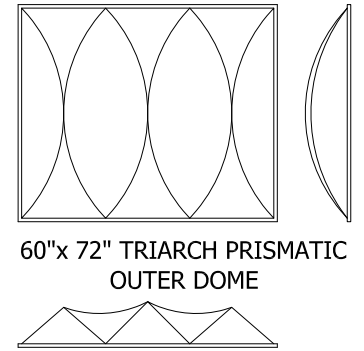
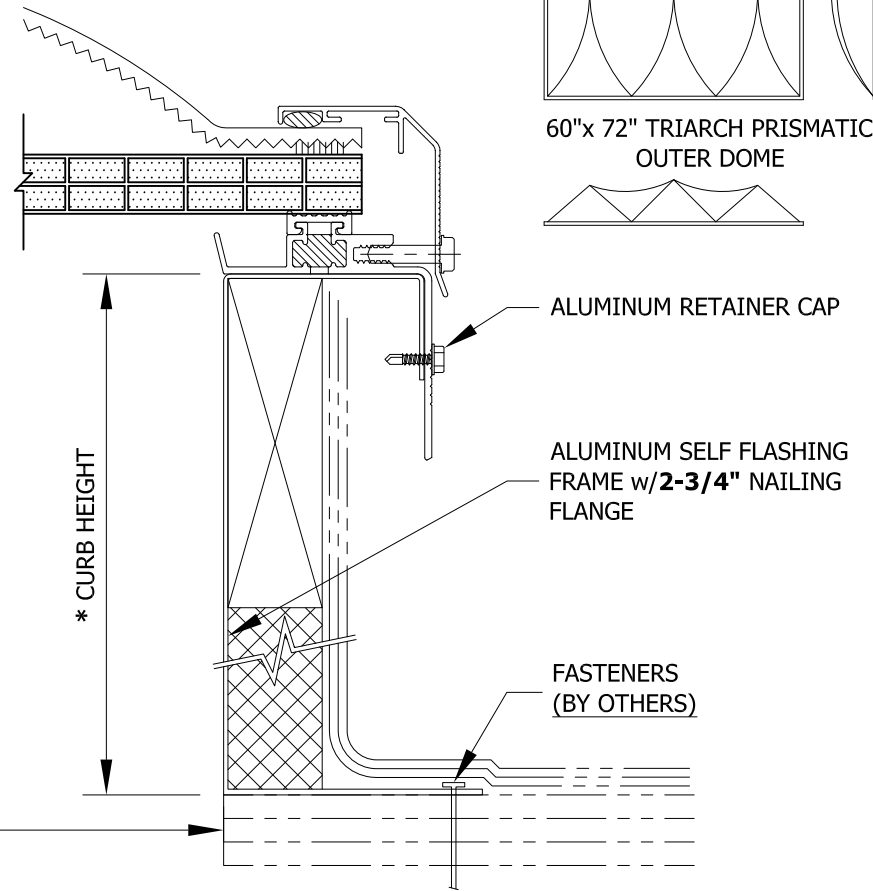
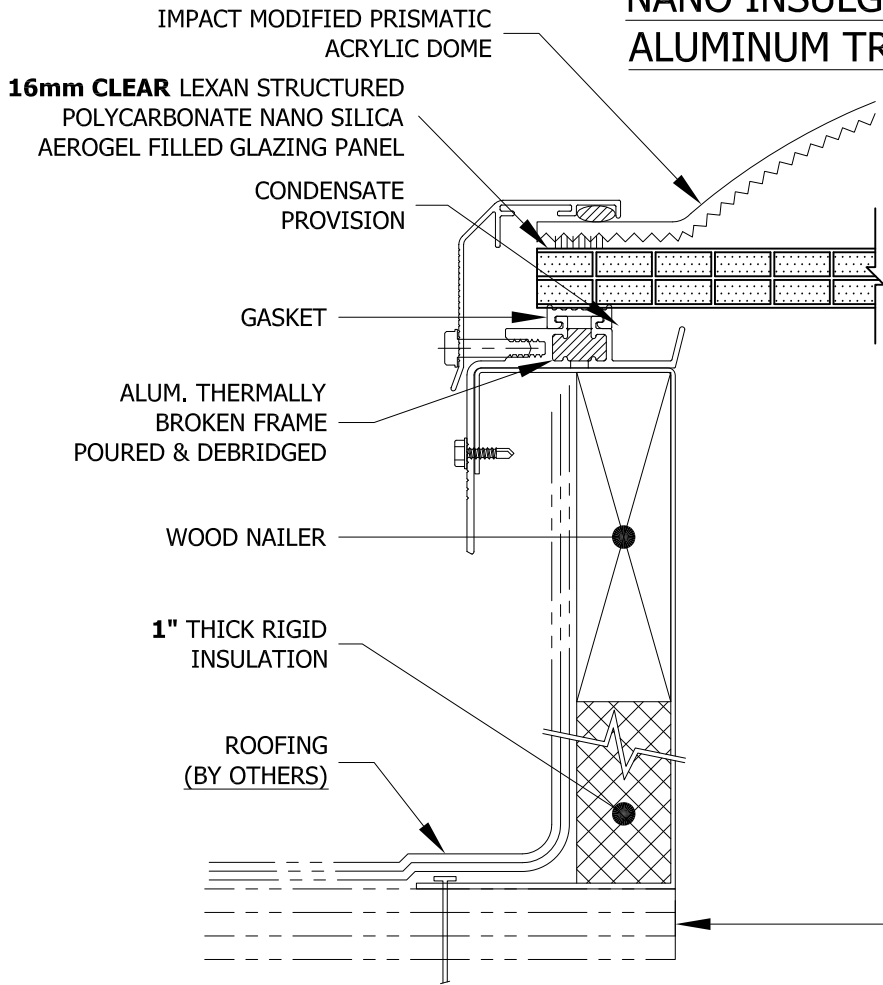


# NANO INSULGEL PRISMATIC / POLYCARBONATE ALUMINUM TRIARCH SELF FLASHING SKYLIGHT



60"x 72" TRIARCH PRISMATIC OUTER DOME

MODEL: ALIT-SF-2-PM-16 mm NANO (NOT TO SCALE)		CURB HEIGHT ○ 9" ○ 12"		MODEL NUMBER	ROUGH OPENING DIMENSIONS	QTY	MODEL NUMBER	ROUGH OPENING DIMENSIONS	QTY	MODEL NUMBER	ROUGH OPENING DIMENSIONS	QTY
				SQUARE			RECTANGULAR			RECTANGULAR - (cont.)		
OUTER PRISMATIC COLOR		INSULGEL PANEL COLOR		1414 ALIT-SF	14 1/4" x 14 1/4"		1422 ALIT-SF	14 1/4" x 22 1/4"		3096 ALIT-SF	30 1/4" x 96"	
○ CLEAR (CPM) ○ WHITE (WPM)		○ CLEAR (C) ○ WHITE (W)		1919 ALIT-SF	19" x 19"		1446 ALIT-SF	14 1/4" x 46 1/4"		3496 ALIT-SF	34" x 96"	
○ OTHER:		○ OTHER:		2222 ALIT-SF	22 1/4" x 22 1/4"		2230 ALIT-SF	22 1/4" x 30 1/4"		3746 ALIT-SF	37" x 46 1/4"	
				3030 ALIT-SF	30 1/4" x 30 1/4"		2237 ALIT-SF	22 1/4" x 37"		3775 ALIT-SF	37" x 75"	
				3737 ALIT-SF	37" x 37"		2246 ALIT-SF	22 1/4" x 46 1/4"		3859 ALIT-SF	38" x 59"	
				4242 ALIT-SF	42" x 42"		2272 ALIT-SF	22 1/4" x 72"		4669 ALIT-SF	46 1/4" x 69 1/2"	
FRAME FINISH				4646 ALIT-SF	46 1/4" x 46 1/4"		2296 ALIT-SF	22 1/4" x 96"		4689 ALIT-SF	46 1/4" x 89 1/2"	
○ BRONZE ANODIZED (BA) ○ CLEAR ANODIZED (CA) ○ MILL FINISH (MF)				4848 ALIT-SF	48" x 48"		2448 ALIT-SF	24 1/4" x 48"		4884 ALIT-SF	48" x 84"	
○ WHITE PAINT (WP) ○ OTHER:				5555 ALIT-SF	55" x 55"		3037 ALIT-SF	30 1/4" x 37"		4896 ALIT-SF	48" x 96"	
				6060 ALIT-SF	60" x 60"		3046 ALIT-SF	30 1/4" x 46 1/4"		5460 ALIT-SF	50" x 60"	
							3069 ALIT-SF	30 1/4" x 69 1/2"		6072 ALIT-SF	60" x 72"	

<b>Bristolite Daylighting Systems</b>  401 East Goetz Avenue, Santa Ana, CA. 92707 TEL 714.540.8950 / FAX 714.540.5415	CUSTOMER :	PREPARED BY :	JOB NO :
	PROJECT :	SUBMITTAL DATE :	SHEET NO.: