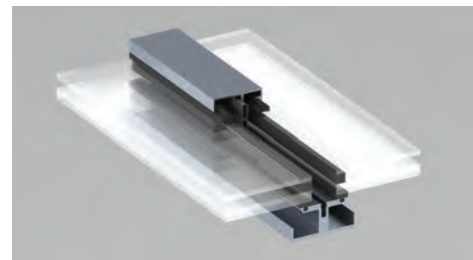
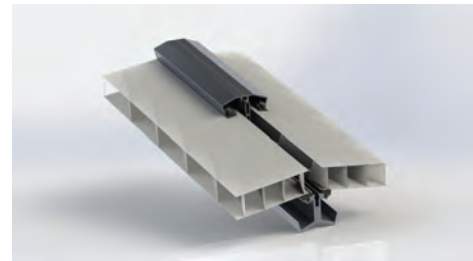
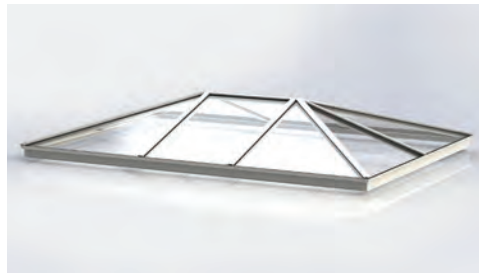
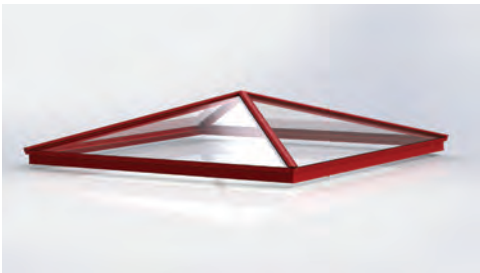


# SkyQuick

## Custom Skylights Brochure

Customized Skylight Options for Most Applications



# SkyQuick

SkyQuick metal framed skylights by Kingspan Light + Air are high performance “custom units” with quick pricing, quick lead times and quick installation. Unlike most custom skylights that are site built, SkyQuick ships pre-assembled up to 8ft wide & pre-glazed (up to 6ft wide) for easy installation. Glazing options include Low-E glass as well as cutting edge technology like silica aerogel infill and prismatic/multiwall materials that reduce solar heat gain & improve U factors.

Kingspan Light + Air is the innovation leader in daylighting. Our Green Building Technology products incorporate state of the art technology into our daylighting solutions. And now with manufacturing locations in California, Texas and Georgia we are able to deliver even faster than ever with reduced transportation costs. SkyQuick is available in both standard and custom sizes at standard pricing. Finish options include mill, anodized, standard and custom fluoropolymer. It is available as Pyramids, Ridges, Hipped Ridges & Octagons.

SkyQuick by Kingspan Light + Air features:

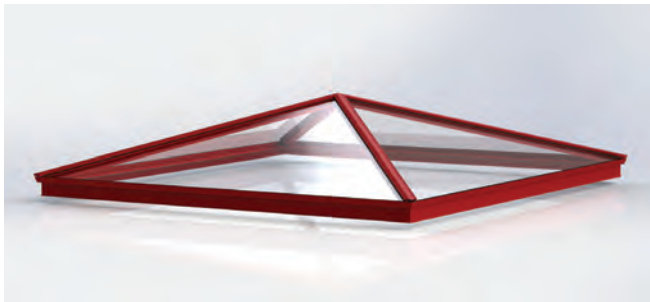
- AAMA Compliant Thermal Break Frame
- Engineered Polymer Glazing Clip
- One Piece Concealed Fastener Glazing Cap
- Green Building Technology Glazing
- Custom Sizes, Shapes & Finishes
- High Performance Air & Water Resistance
- Pre-Glazed & Pre-Assembled
- Optional Hoisting Clips Available

## Glazing Comparison

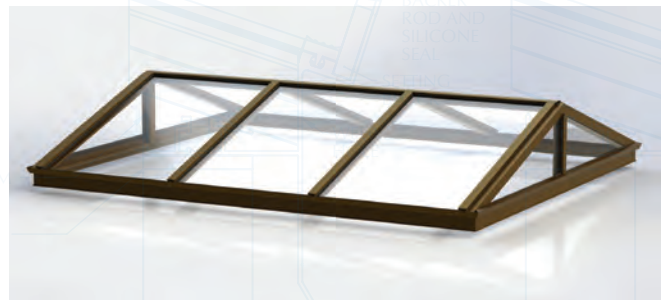
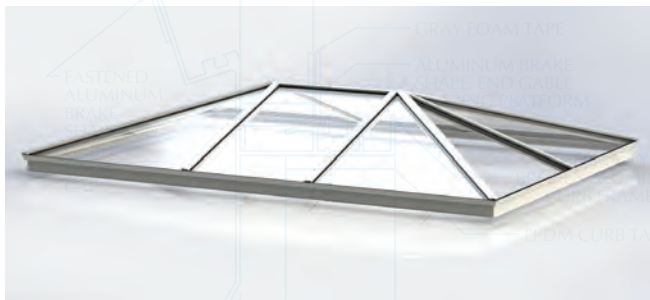
	Clear Insulating Glass	Clear Insulating Glass Low-E	Insulair (Opal)	Insulair (Clear)	Quasar Insulair	Nano Insulgel	Coollite
Visible Light Transmission (%)	79	69	28	45	41	48	54
Solar Heat Gain Coefficient	0.70	0.37	0.46	0.64	0.58	0.42	0.26
U Factor	0.50	0.30	0.29	0.29	0.26	0.17	0.45



## Pyramid (SQP) & Octagon (SQO)



## Ridge Hipped/Vertical Ends (SQRH/SQRV)

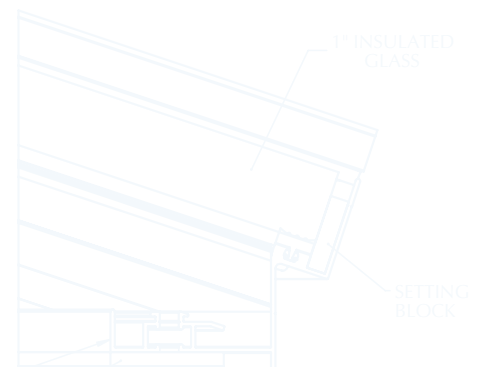


## Features

- Pre-Assembled up to 8ft wide
- Pre-Glazed up to 6ft wide
- Multiple Glazing Options
- Ready To Install
- High Performance System
- Optional Hoisting Clips Available

## Glazing Options

- |                    |                                     |
|--------------------|-------------------------------------|
| • Insulated Glass  | Clear/Tinted Insulating Glass       |
| • IG Low-E         | Clear/Tinted Insulating Glass Low-E |
| • Insulair (Opal)  | 10X Multiwall                       |
| • Insulair (Clear) | 10X Multiwall                       |
| • Quasar Insulair  | Prismatic/10X Multiwall             |
| • Nano Insulgel    | Silica Aerogel Multiwall            |
| • Coollite         | Spectrally Selective IR/UV Blocking |



---

## Kingspan Light + Air

North America - Texas Operation  
100 Metro Drive, Terrell, Texas 75160  
Toll Free: +1 (800) 854 8618  
T: +1 (855) 266 1331  
F: +1 (972) 210 4091  
E: [info@kingspanlightandair.us](mailto:info@kingspanlightandair.us)  
[www.kingspan.com/us](http://www.kingspan.com/us)  
[www.bristolite.com](http://www.bristolite.com)  
[www.cpidaylighting.com](http://www.cpidaylighting.com)

For the product offering in other markets please contact your local sales representative or visit [www.kingspanlightandair.us](http://www.kingspanlightandair.us)

### Notes

Kingspan Light + Air reserves the right to modify the design, change or discontinue products without prior written notice. The information contained in this brochure is based on data which are believed to be reliable, but no liability is assumed for any method or manner of use by the purchaser.

For more information about our limited warranty, contact Kingspan Light + Air.

For additional technical information and/or daylighting systems design consultation, contact Kingspan Light + Air for your specific needs. Care has been taken to ensure that the contents of this publication are accurate, but Kingspan Limited and its subsidiary companies do not accept responsibility for errors or for information that is found to be misleading. Suggestions for, or description of, the end use or application of products or methods of working are for information only and Kingspan Limited and its subsidiaries accept no liability in respect thereof.