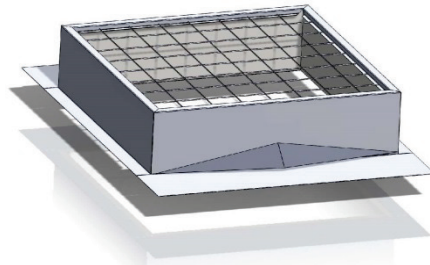


# Gladiator

## Metal Building Roof Curb

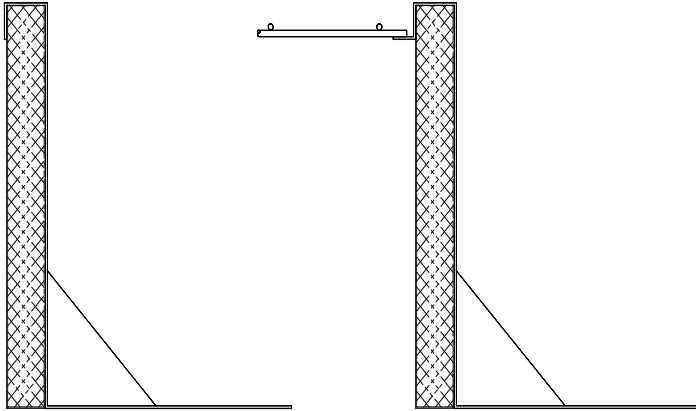


**Model MBRC-1**

**Frame Material**  
Galvalume

Metal Building Roof Curb

### Details



MBRC-1

MBRC-1-SSCRN

### Specifications

Gladiator Roof Curb shall be model No. \_\_\_\_\_. The metal building roof curb shall be constructed with 18-gauge galvalume and white painted. The curb is insulated with 1-1/2" 3# density fiberglass insulation and has an integral cricket. Full height mitered and welded corners. All welds are leak tested after fabrication. Optional Ø3/16" Safety Screen available in a 6" x 6" grid pattern (OSHA compliant per 29 CFR ss. 1910.23 & s. 1926.501).

### Sizes:

Model Number	Inside Curb Dimension*	Model Number	Inside Curb Dimension*	Model Number	Inside Curb Dimension*	Model Number	Inside Curb Dimension*
3737-MBRC-1	37" x 37"	9292-MBRC-1	92 1/2" x 92 1/2"	3037-MBRC-1	30 1/4" x 37"	4689-MBRC-1	46 1/4" x 89 1/2"
4242-MBRC-1	42" x 42"			3046-MBRC-1	30 1/4" x 46 1/4"	4872-MBRC-1	48" x 72"
4646-MBRC-1	46 1/4" x 46 1/4"			3069-MBRC-1	30 1/4" x 69 1/2"	4884-MBRC-1	48" x 84"
4848-MBRC-1	48" x 48"			3096-MBRC-1	30 1/4" x 96"	4896-MBRC-1	48" x 96"
5555-MBRC-1	55" x 55"			3496-MBRC-1	34" x 96"	5460-MBRC-1	54" x 60"
6060-MBRC-1	60" x 60"			3746-MBRC-1	37" x 46 1/4"	6072-MBRC-1	60" x 72"
7070-MBRC-1	70 1/4" x 70 1/4"			3775-MBRC-1	37" x 75"	6084-MBRC-1	60" x 84"
7575-MBRC-1	75" x 75"			3859-MBRC-1	38" x 59"	6096-MBRC-1	60" x 96"
8484-MBRC-1	84" x 84"			4669-MBRC-1	46 1/4" x 69 1/2"	Call for additional sizes	

U Factor = 0.16, R Value = 7.5

### Features:

1. 18-gauge galvalume
2. 1-1/2" thick 3# density fiberglass insulation
3. Integral cricket water diverter
4. Minimum 8" upslope height
5. Includes extended side flanges & cell caps for multiple roof profiles
6. Under/over design for standing seam roofs
7. 20 Year limited warranty

Add highlighted suffixes to model number where applicable:  
i.e. **4896-MBRC-1-SSCRN**

### Options:

1. Ø3/16" Safety Screen with a 6" x 6" Grid Pattern (**SSCRN**)
2. Cell Caps shipped loose to fit the following roofing profiles:
  - a. **All Weather SR2**
  - b. **American SSII (CBC MS24)**
  - c. **Butler MR24**
  - d. **NCI / MBCI Ultradek**
  - e. **Nucor CFR**
  - f. **Varco Pruden SSR**
  - g. **Contact Customer Service (CS) for additional OEM's.**