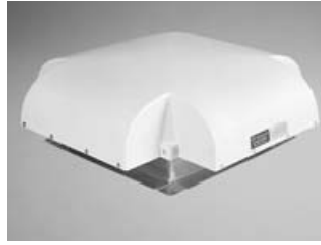


Airflow Gravity Skyvent

Industrial Gravity Skyvent

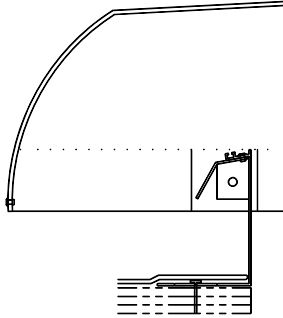


Fiberlite Skyvent

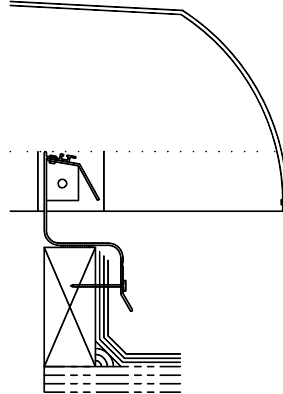
Model GV

Frame Material
Aluminum

Details (Scale: 2":1'-0")



GV-SF



GV-CM

Specifications

Airflow Gravity Skyvents shall be model No. _____ as manufactured by Bristolite Daylighting Systems, Santa Ana, CA. The opaque or translucent fiberglass ventilator hood comes attached to a frame fabricated from 6063-T5 heliarc welded aluminum and shall be installed on a 1-1/2" wide curb furnished by others or on its own 4", 9" or 12" self flashing curb fabricated from aluminum with a 2-3/4" roof flange. Bird screen is included.

Sizes:

Model Number	Inside Curb Dimension	Free Air Space	Minimum Curb Height
1212-GV	12" x 12"	1.0 sq. ft.	5"
1414-GV	14 1/4" x 14 1/4"	1.5 sq. ft.	5"
1818-GV	18" x 18"	2.0 sq. ft.	6"
2222-GV	22 1/4" x 22 1/4"	3.0 sq. ft.	7"
2424-GV	24" x 24"	4.0 sq. ft.	8"
3030-GV	30 1/4" x 30 1/4"	6.0 sq. ft.	9"
4242-GV	42" x 42"	12.0 sq. ft.	12"
4848-GV	48" x 48"	16.0 sq. ft.	13 1/2"

Model Number	Inside Curb Dimension	Free Air Space	Minimum Curb Height

Features:

- Curb Mounted (CM) or Self Flashing (SF)
- Built in Bird Screen
Add highlighted suffixes to model number where applicable:
i.e. 1818-GV-CM

Options:

- Self Flashing Bases of 9" or 12" (9 or 12)
- Translucent Ventilator Hood (FTH)
- Opaque Ventilator Hood (FBK)

Accessories: See PDS (Product Data Sheets) for these Items

- Gladiator
 - Structural Curb (SC)
 - Security Grills (SG)
 - Safety Screens (SSCRN)
- Quickkit (Installation Kits)
 - Stainless Steel (QKSS)
 - Zinc Plated (QKZP)