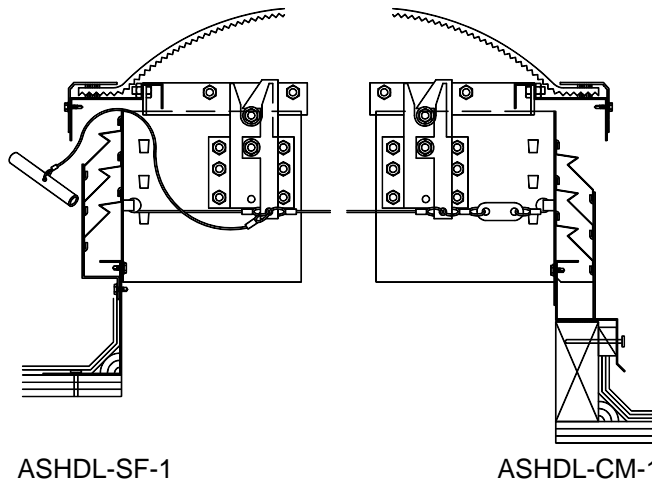


Industrial Louvered Smoke Hatch
and (Optional) Security Grill

Prismatic Triarch

Details (Scale: 2":1'-4")



Specifications

Quasar Smoke Hatch shall be model No. _____ as manufactured by Bristolite Daylighting Systems, Santa Ana, CA. Smoke Hatches shall be glazed with a plastic dome using prismatic material. The dome is attached to an openable frame, which in turn is attached to the base frame with a hinge. This frame is compression loaded by torsion springs and secured on the opposite side with latches operated either manually, or by UL/FM listed fusible links. The operable frame comes attached to a louvered frame. The louvers will be fixed storm resistant louver blades of galvanized steel and shall be continuous. All frames to be fully welded for water tight integrity. The frame is to have an integral condensation channel to carry moisture to the exterior. The dome retaining fasteners are to be corrosion resistant. The louvered frame is attached to a base frame fabricated of 6063-T5 hellarc welded aluminum and shall be installed either on a 1-1/2" wide curb furnished by others or on its own 4", 9", or 12" high self flashing curb fabricated from aluminum with a 2-3/4" roof flange. Materials are Approved Plastic CC-2 Rated.

Sizes:

| Model Number | Inside Curb Dimension | Approx. Amount of Free Air Space in Sq. Ft. | Model Number | Inside Curb Dimension | Approx. Amount of Free Air Space in Sq. Ft. |
|--------------|-----------------------|---|--------------|-----------------------|---|
| 4848-ASHDL | 48" x 48" | 6.0 | 4896-ASHDL | 48" x 96" | 9.0 |
| 6060-ASHDL | 60" x 60" | 8.0 | 6072-ASHDL | 60" x 72" | 8.0 |

Solar Heat Gain Coefficient = .50, U Factor = .57, Visible Light Transmission = 70% (Typical for WPM double glazed units)

Features:

1. Curb Mounted (CM) or Self Flashing (SF)
2. Two Prismatic Color Choices: White Prismatic Acrylic (WPM) or Clear Prismatic Acrylic (CPM)
3. Exterior and/or Interior Manual Releases (M1, M2 or M3)
4. Fusible Link Temperatures: 165°, 212°, 286°, 360° or 520°
Add highlighted suffixes to model number where applicable:
i.e. 4848-ASHDL-SF-1-CPM-12-IS

Options:

1. Low Profile Dome (LP) (selected sizes)
2. Self Flashing Bases of 9" or 12" (9 or 12)
3. Insulated Frame (INS)
4. Double Wall Frame (DW)
5. Insect Screens (IS) or Bird Screens (BS)

Options: (cont.)

6. Rain Guard (RG) and/or Dust Filters (DF)

Accessories: See PDS (Product Data Sheets) for these Items

1. Gladiator
 - a. Structural Curb (SC)
 - b. Security Grills (SG)
 - c. Safety Screens (SSCRN)
2. Quickkit (Installation Kits)
 - a. Stainless Steel (QKSS)
 - b. Zinc Plated (QKZP)