

# Energy Star Smoke Vent

Industrial Louvered Smoke Vent  
and (Optional) Security Grill

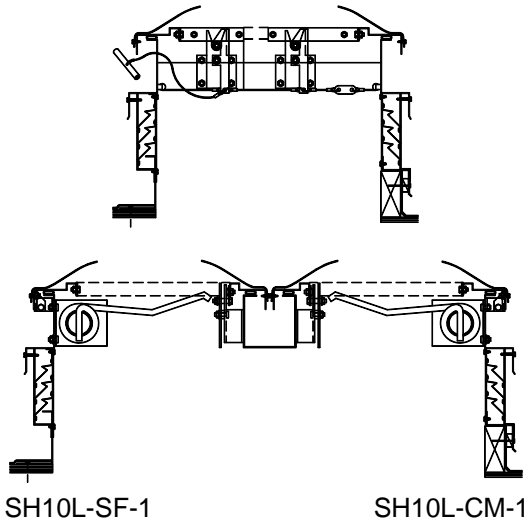
Fiberglass Dome

Model SH10L

**Frame Material**  
Steel

Bristolite fiberglass glazing has been load tested and complies with OSHA – CFR's for fall protection.

Details (Scale: 3/4":1'-0")



Specifications

Energy Star Smoke Vents shall be model No. \_\_\_\_\_ as manufactured by Bristolite Daylighting Systems, Santa Ana, CA. The curb, cross stiffeners and double doors shall be fabricated from galvanized steel and shall be glazed with CC-1 rated fiberglass domes. Corners shall be welded to insure weather tightness. The smoke vent domes come attached to a louvered frame. The louvers will be fixed storm resistant louver blades of galvanized steel and shall be continuous. The double lid domes are compression loaded by torsion springs, secured on the opposite side with actuated latches and equipped with heavy-duty shock absorbers to control the speed of operation operated either manually, or by UL/FM listed fusible links. They can also be opened by the manual exterior handle. The door will open against a 10psf uniform load. In the closed position the units will withstand a minimum 40psf uniform static positive and negative load. The louvered frame is attached to a base frame of galvanized steel and shall be installed either on a 1-1/2" wide curb furnished by others or on its own 4", 9", or 12" high self flashing curb with a 2-3/4" roof flange. The unit meets the requirements of UBC Standard 15-7.

Materials tested in conformance with FM 4431 including 2" severe hail test.

**Sizes:**

Model Number	Inside Curb Dimension	Approx. Amount of Free Air Space in Sq. Ft.	Model Number	Inside Curb Dimension	Approx. Amount of Free Air Space in Sq. Ft.
4848-SH10L	48" x 48"	6.0	4896-SH10L	48" x 96"	9.0
			6072-SH10L	60" x 72"	8.0

Solar Heat Gain Coefficient = .46, U Factor = .63, Visible Light Transmission = 63% (Typical for ESA double glazed units)

**Features:**

1. Curb Mounted (CM) or Self Flashing (SF)
2. Energy Star Glazing (ESA)
3. Exterior and/or Interior Manual Releases (M1, M2 or M3)
4. Fusible Link Temperatures: 165°, 212°, 286°, 360° or 520°  
Add highlighted suffixes to model number where applicable:  
i.e. 4896-SH10L-CM-1-ESA-M3-RG

**Options:**

1. Self Flashing Bases of 9" or 12" (9 or 12)
2. Insulated Frame (INS)
3. Double Wall Frame (DW)
4. Insect Screens (IS) or Bird Screens (BS)

**Options: (cont.)**

5. Rain Guard (RG) and/or Dust Filters (DF)

**Accessories:** See PDS (Product Data Sheets) for these Items

1. Gladiator
  - a. Structural Curb (SC)
  - b. Security Grills (SG)
  - c. Safety Screens (SSCRN)
2. Quickkit (Installation Kits)
  - a. Stainless Steel (QKSS)
  - b. Zinc Plated (QKZP)