

Nano Insulgel

Super Insulating Silica Aerogel

Industrial Skylight and
(Optional) Security Grill



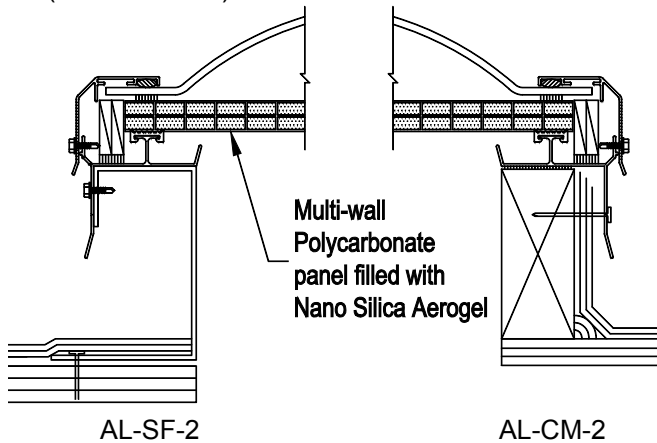
Acrylic Dome

Model AL

Frame Material
Aluminum

Bristolite acrylic glazing has been load tested and complies with OSHA – CFR's for fall protection.

Details (Scale: 3":1'-0")



Specifications

Nano Insulgel Skylight shall be model No. _____ as manufactured by Bristolite Daylighting Systems, Santa Ana, CA. The skylight shall consist of an acrylic glazing plus a structural polycarbonate panel filled with nano silica aerogel. The frame is a fabricated 6063-T5 heliarc welded aluminum frame and has an integral condensate channel to carry moisture to the exterior. The aluminum retaining cap fasteners are to be corrosion resistant. The skylight shall be installed either on a 1-1/2" wide curb furnished by others or on its own 4", 9" or 12" high self flashing curb fabricated from aluminum with a 2-3/4" roof flange. Materials are Approved Plastic CC-2 Rated.

Sizes:

Model Number	Inside Curb Dimension	Model Number	Inside Curb Dimension	Model Number	Inside Curb Dimension	Model Number	Inside Curb Dimension
1414-AL	14 1/4" x 14 1/4"	6060-AL	60" x 60"	2448-AL	24 1/4" x 48"	3775-AL	37" x 75"
1919-AL	19" x 19"			2496-AL	24 1/4" x 96"	3859-AL	38" x 59"
2222-AL	22 1/4" x 22 1/4"	1422-AL	14 1/4" x 22 1/4"	3037-AL	30 1/4" x 37"	4669-AL	46 1/4" x 69 1/2"
3030-AL	30 1/4" x 30 1/4"	1446-AL	14 1/4" x 46 1/4"	3046-AL	30 1/4" x 46 1/4"	4689-AL	46 1/4" x 89 1/2"
3737-AL	37" x 37"	2230-AL	22 1/4" x 30 1/4"	3069-AL	30 1/4" x 69 1/2"	4884-AL	48" x 84"
4242-AL	42" x 42"	2237-AL	22 1/4" x 37"	3096-AL	30 1/4" x 96"	4896-AL	48" x 96"
4646-AL	46 1/4" x 46 1/4"	2246-AL	22 1/4" x 46 1/4"	3496-AL	34" x 96"	5460-AL	54" x 60"
4848-AL	48" x 48"	2272-AL	22 1/4" x 72"	3696-AL	36" x 96"	6072-AL	60" x 72"
5555-AL	55" x 55"	2296-AL	22 1/4" x 96"	3746-AL	37" x 46 1/4"	Call for additional sizes	

Solar Heat Gain Coefficient = .31, U Factor = .37, Visible Light Transmission = 48% (Typical for CM-CC-CNANO double glazed units)

Features:

1. Curb Mounted (**CM**) or Self Flashing (**SF**)
 2. Two Acrylic Color Choices: Medium White Translucent (**WTM**) or Clear (**CC**)
- Add highlighted suffixes to model number where applicable:
i.e. **4848-AL-CM-2-CC-16mm-NANO-MF**

Options:

1. Insulating Double Domes (**2**)
2. Frame Finish - Bronze Anodize (**BA**), Clear Anodize (**CA**), White Painted (**WP**) or Mill Finish (**MF**)
3. Self Flashing Bases of 9" or 12" (**9** or **12**)
4. Insulated Frame (**INS**)
5. Wood Nailer (**WN**)

Options: (cont.)

6. Double Wall Frame (**DW**)
7. Nano Insulgel Panel Thickness: **10mm, 16mm, 20mm & 25mm**

Accessories: See PDS (Product Data Sheets) for these Items

1. Gladiator
 - a. Structural Curb (**SC**)
 - b. Security Grills (**SG**)
 - c. Safety Screens (**SSCRN**)
 - d. External Safety Cage (**SCAGE**)
2. Quickkit (Installation Kits)
 - a. Stainless Steel (**QKSS**)
 - b. Zinc Plated (**QKZP**)