

Quasar LowE

Solar Heat Blocker Glazing & Super Insulator Silica Aerogel

Industrial Skylight
Thermally Broken



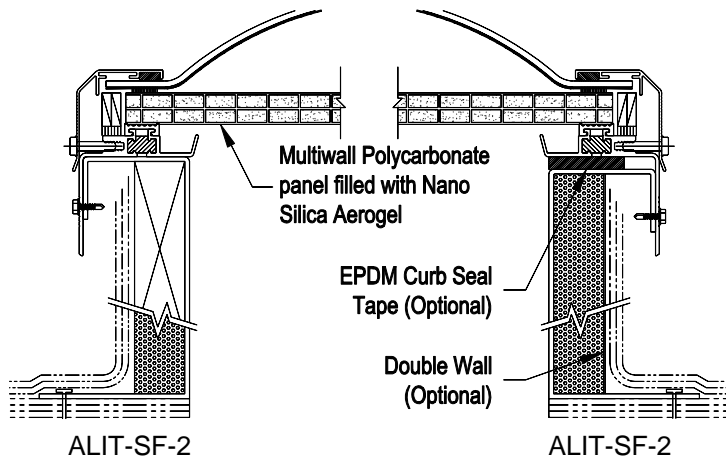
Acrylic/Polycarbonate Dome



Model ALIT

Frame Material: Aluminum
NFRC: Certified
IECC 2015: Meets without controls all climate zones
OSHA: Meets CFR fall regulations
AAMA: WDMA/CSA 101/I.S.2/A440-08 & WDMA/CSA 101/I.S.2/A440-05

Details:



Specifications

Quasar LowE skylight shall be model No. _____ as manufactured by Bristolite Daylighting Systems, Santa Ana, CA. The skylight shall be glazed with a plastic dome using acrylic or polycarbonate material covered with a specially formulated infrared and ultraviolet light reflecting coating plus a structural polycarbonate panel filled with nano silica aerogel to a 6063-T5 heliarc welded aluminum frame fabricated of aluminum and polyurethane thermal break material to prevent thermal losses through the frame and the formation of condensation on its interior surfaces. The frame is to have an integral condensation channel to carry moisture to the exterior. The aluminum retaining cap fasteners are to be corrosive resistant. The skylight frame shall be installed on its own 9" or 12" high self flashing curb fabricated from aluminum with a 2-3/4" roof nailing flange. The base is made up with 1" insulation and a wood nailer and/or an additional aluminum liner on the exterior of the self flashing curb.

Sizes:

Model Number	Inside Curb Dimension	Model Number	Inside Curb Dimension	Model Number	Inside Curb Dimension	Model Number	Inside Curb Dimension
1414-ALIT	14 1/4" x 14 1/4"	6060-ALIT	60" x 60"	2448-ALIT	24" x 48"	3775-ALIT	30 1/4" x 96"
1919-ALIT	19" x 19"			2496-ALIT	24" x 96"	3859-ALIT	34" x 96"
2222-ALIT	22 1/4" x 22 1/4"	1422-ALIT	14 1/4" x 22 1/4"	3037-ALIT	30 1/4" x 37"	4669-ALIT	36" x 96"
3030-ALIT	30 1/4" x 30 1/4"	1446-ALIT	14 1/4" x 46 1/4"	3046-ALIT	30 1/4" x 46 1/4"	4689-ALIT	37" x 46 1/4"
3737-ALIT	37" x 37"	2230-ALIT	22 1/4" x 30 1/4"	3069-ALIT	30 1/4" x 69 1/2"	4884-ALIT	37" x 75"
4242-ALIT	42" x 42"	2237-ALIT	22 1/4" x 37"	3096-ALIT	30 1/4" x 96"	4896-ALIT	38" x 59"
4646-ALIT	46 1/4" x 46 1/4"	2246-ALIT	22 1/4" x 46 1/4"	3496-ALIT	34" x 96"	5460-ALIT	46 1/4" x 69 1/2"
4848-ALIT	48" x 48"	2272-ALIT	22 1/4" x 72"	3696-ALIT	36" x 96"	6072-ALIT	46 1/4" x 89 1/2"
5555-ALIT	55" x 55"	2296-ALIT	22 1/4" x 96"	3746-ALIT	37" x 46 1/4"	Call for additional sizes	

Solar Heat Gain Coefficient = .24, U Factor = .31, Visible Light Transmission = 49% (Typical for ACO double glazed units)

Features:

1. Self Flashing (SF)
2. Acrylic Coollite (ACO) or Polycarbonate Coollite (PCO)
3. Insulated Curb (INS)
4. Wood Nailer (WN)

Add highlighted suffixes to model number where applicable:
 i.e. 6072-ALIT-SF-2-ACO-16mm-NANO-9-INS-DW-MF

Options:

1. Insulating Double Domes (2)
2. Low Profile Dome (selected sizes) (LP)
3. Frame Finish - Bronze Anodize (BA), Clear Anodize (CA), White Painted (WP) or Mill Finish (MF)
4. Self Flashing Bases of 9" or 12" (9 or 12)
5. Aluminum Double Wall (DW)

Options: (cont.)

6. EPDM Curb Seal Tape
7. Nano Insulgel Panel Thickness: 10mm, 16mm, 20mm & 25mm

Accessories: See PDS (Product Data Sheets) for these Items

1. Gladiator
 - a. Security Grills (SG)
 - b. Safety Screens (SSCRN)
 - c. External Safety Cages (SCAGE)