

Quasar Low-E

Solar Heat Blocker Acrylic & Super Insulator Silica Aerogel

Industrial Skylight Thermally Broken and (Optional) Security Grill



Inside View

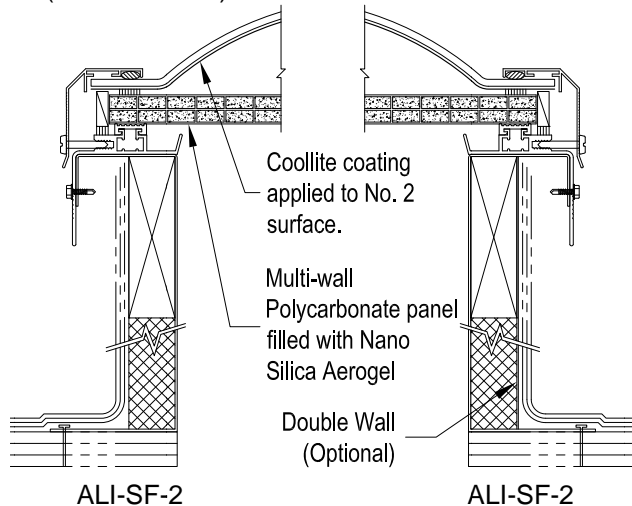
Model ALI

Frame Material
Aluminum



Acrylic Dome

Details (Scale: 3":1'-0")



Specifications

Quasar Low-E Skylight shall be model No. _____ as manufactured by Bristolite Daylighting Systems, Santa Ana, CA. The skylight shall be glazed with a plastic dome using acrylic material covered with a specially formulated infrared and ultraviolet light reflecting coating plus a structural polycarbonate panel filled with nano silica aerogel to a 6063-T5 heliarc welded aluminum frame. The frame is to have an integral condensation channel to carry moisture to the exterior. The aluminum retaining cap fasteners are to be corrosive resistant. The base frame shall be installed either on a 1-1/2" wide curb furnished by others or on its own 4", 9", or 12" high self flashing curb fabricated from aluminum with a 2-3/4" roof flange with 1" of insulation and an aluminum liner on the exterior of the self flashing frame. Materials are Approved Plastic CC-2 Rated.

Sizes:

| Model Number | Inside Curb Dimension | Model Number | Inside Curb Dimension | Model Number | Inside Curb Dimension | Model Number | Inside Curb Dimension |
|--------------|-----------------------|--------------|-----------------------|--------------|-----------------------|--------------|---------------------------|
| 1414-ALI | 14 1/4" x 14 1/4" | 6060-ALI | 60" x 60" | 2448-ALI | 24 1/4" x 48" | 3775-ALI | 37" x 75" |
| 1919-ALI | 19" x 19" | | | 2496-ALI | 24 1/4" x 96" | 3859-ALI | 38" x 59" |
| 2222-ALI | 22 1/4" x 22 1/4" | 1422-ALI | 14 1/4" x 22 1/4" | 3037-ALI | 30 1/4" x 37" | 4669-ALI | 46 1/4" x 69 1/2" |
| 3030-ALI | 30 1/4" x 30 1/4" | 1446-ALI | 14 1/4" x 46 1/4" | 3046-ALI | 30 1/4" x 46 1/4" | 4689-ALI | 46 1/4" x 89 1/2" |
| 3737-ALI | 37" x 37" | 2230-ALI | 22 1/4" x 30 1/4" | 3069-ALI | 30 1/4" x 69 1/2" | 4884-ALI | 48" x 84" |
| 4242-ALI | 42" x 42" | 2237-ALI | 22 1/4" x 37" | 3096-ALI | 30 1/4" x 96" | 4896-ALI | 48" x 96" |
| 4646-ALI | 46 1/4" x 46 1/4" | 2246-ALI | 22 1/4" x 46 1/4" | 3496-ALI | 34" x 96" | 5460-ALI | 54" x 60" |
| 4848-ALI | 48" x 48" | 2272-ALI | 22 1/4" x 72" | 3696-ALI | 36" x 96" | 6072-ALI | 60" x 72" |
| 5555-ALI | 55" x 55" | 2296-ALI | 22 1/4" x 96" | 3746-ALI | 37" x 46 1/4" | | Call for additional sizes |

Solar Heat Gain Coefficient = .26, U Factor = .20, Visible Light Transmission = 49% (Typical for ACO double glazed units)

Features:

1. Self Flashing (SF)
2. Acrylic Coolite Color (ACO) or Polycarbonate Coolite Color (PCO)
3. Insulated Frame (INS)
4. Wood Nailer (WN)

Add highlighted suffixes to model number where applicable:
i.e. 6072-ALI-SF-2-ACO-16mm-NANO-9-INS-WN-MF

Options:

1. Insulating Double Domes (2)
2. Low Profile Dome (LP) (selected sizes)
3. Frame Finish - Bronze Anodize (BA), Clear Anodize (CA), White Painted (WP) or Mill Finish (MF)
4. Self Flashing Bases of 9" or 12" (9 or 12)

Options: (cont.)

5. Double Wall Frame (DW)
6. Nano Insugel Panel Thickness: 10mm, 16mm, 20mm & 25mm

Accessories: See PDS (Product Data Sheets) for these Items

1. Gladiator
 - a. Structural Curb (SC)
 - b. Security Grills (SG)
 - c. Safety Screens (SSCRN)
2. Quickkit (Installation Kits)
 - a. Stainless Steel (QKSS)
 - b. Zinc Plated (QKZP)