

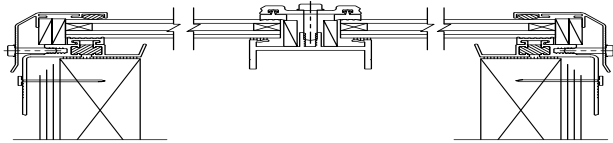


Flat Glass

Model GALTM

Frame Material
Aluminum

Details (Scale: 3":1'-0")



GALTM-CM-I

GALTM-CM-I

Specifications

Alumilite Skylight shall be model No. _____ as manufactured by Bristolite Daylighting Systems, Santa Ana, CA. Skylights shall be fully factory assembled consisting of glass (see below) that is sealed by interior and exterior gasketing to a 6063-T5 heliarc welded aluminum frame fabricated of aluminum and polyurethane thermal break material to prevent thermal losses through the frame and the formation of condensation on its interior surfaces. The frame is to have an integral condensation channel to carry moisture to the exterior. Each unit has 2 glass panels divided by a central aluminum mullion. The aluminum retaining cap fasteners are to be corrosion resistant. The base frame shall be installed on a 1-1/2" wide curb furnished by others.

Sizes:

Model Number	Inside Curb Dimension	Glass Type	Model Number	Inside Curb Dimension	Glass Type	Model Number	Inside Curb Dimension	Glass Type
4242-GALTM	42" x 42"	B-AN	5938-GALTM	59" x 38"	A			
4646-GALTM	46 1/4" x 46 1/4"	B-1	6930-GALTM	69 1/2" x 30 1/4"	A			
			7537-GALTM	75" x 37"	A			
			9622-GALTM	96" x 22 1/4"	A			
			9630-GALTM	96" x 30 1/4"	A			

Minimum pitch of 3:12 is required for all flat glass models.
Solar Heat Gain Coefficient = .52, U Factor = .47, Visible Light Transmission = 51% (Typical for TB glazed units)

Features:

1. Curb Mounted (CM)
2. Three Glass Color Choices: Bronze (TB), Grey (TG) or Clear (TC)
Add highlighted suffixes to model number where applicable:
i.e. 4242-GALTM-CM-I-TB/LC-BA

Options:

1. Frame Finish - Bronze Anodize (BA), Clear Anodize (CA), White Painted (WP) or Mill Finish (MF)
2. Low-E Glass – PPG Solarban 60 (LE)
3. White Laminated Glass (LW)

Glass Type:

- A: 5/8" Thick Overall
(1/8" Tempered, 1/4" Air Space, 1/4" Annealed Lam.)
- B-AN: 15/16" Thick Overall
(1/8" Tempered, 3/8" Air Space, 7/16" Annealed Lam.)
- B-1: 1" Thick Overall
(3/16" Tempered, 3/8" Air Space, 7/16" Annealed Lam.)
- B-HS: 1" Thick Overall
(3/16" Tempered, 3/8" Air Space, 7/16" Heat Strengthened Lam.)
- C: 1-3/16" Thick Overall
(1/4" Tempered, 1/2" Air Space, 7/16" Heat Strengthened Lam.)