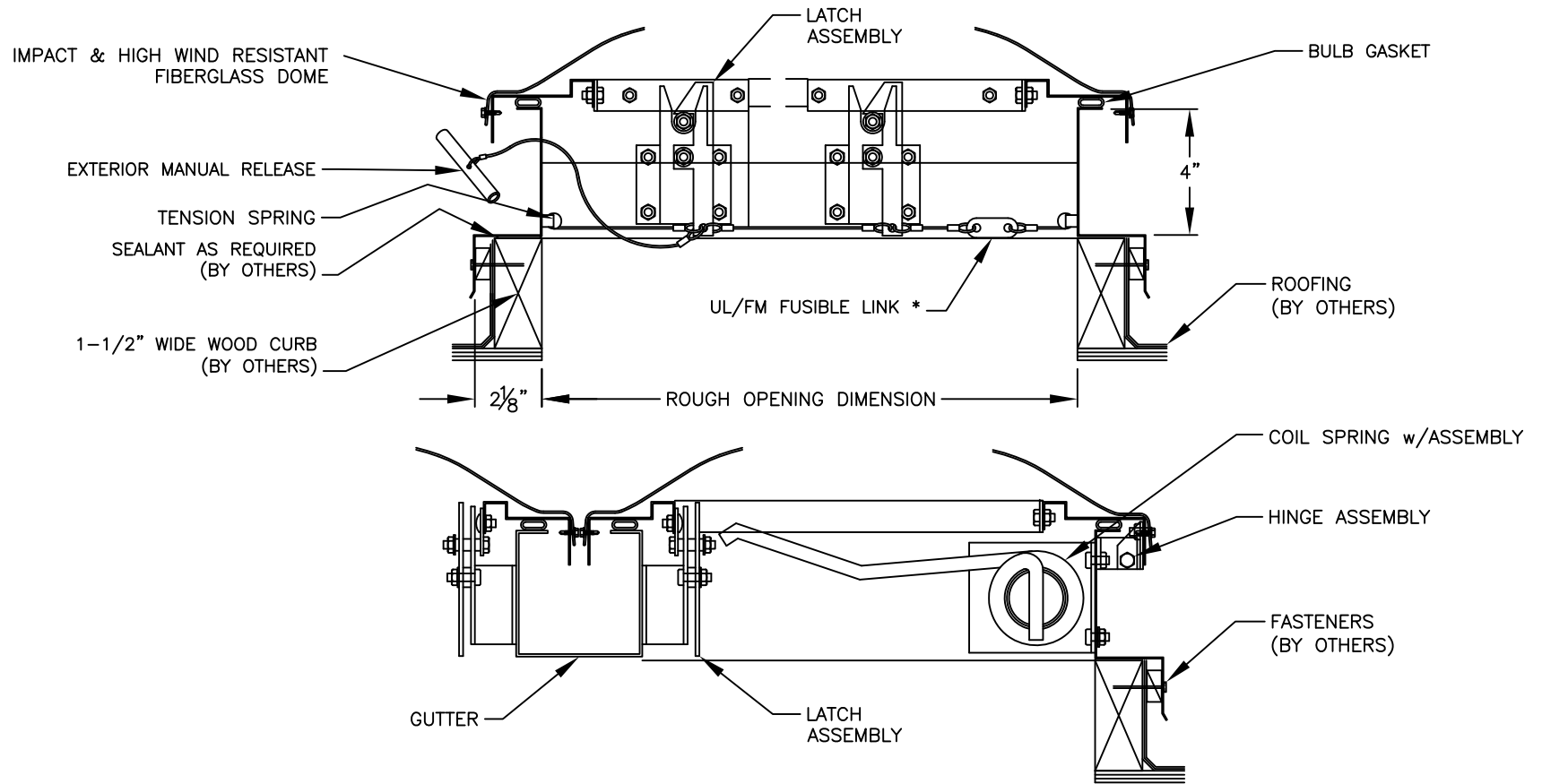


ENERGY STAR ALUMINUM CURB MOUNTED SMOKE VENT w/EXTERIOR MANUAL RELEASE



MODEL: H4896-SH10-CM-1-FTH-IR-HW-M1-MF

NOT TO SCALE

SH10 - SMOKE HATCH 10PSF

CM - CURB MOUNTED

1 - SINGLE GLAZED

FTH - FIBERGLASS TRANSLUCENT HIGH

IR - IMPACT RESISTANT

HW - HIGH WIND RESISTANT

M1 - EXTERIOR MANUAL RELEASE

MF - MILL FINISH

MODEL SIZE	ROUGH OPENING DIMENSION	Q'TY.
4848	48" X 48"	
4896	48" X 96"	
6072	60" X 72"	

UNIT TESTED IN CONFORMANCE WITH UBC 15-7.

DOME MATERIAL TESTED IN CONFORMANCE WITH:

- HIGH WIND RESISTANT - DOME OF THIS UNIT HAS EXCEEDED 90 MPH UPLIFT IN TESTING.
- BURN RATE - CLASSIFIED AS CC1 MATERIAL.
- TESTED AND MET LOAD REQUIREMENTS PER OSHA 29 CFR 1910.23 (e) (8).
- TESTED AND MET REQUIREMENTS AS DESCRIBED IN "STANDARD PRESENTATION TO CALIFORNIA OCCUPATIONAL SAFETY AND HEALTH STANDARDS BOARD - PROPOSED STATE STANDARD, TITLE 8, CHAPTER 4, SECTION 1632 (REPORT NUMBER 3075015-2).
- TESTING PERFORMED ON 48"x96" DOME.

*** FUSTIBLE LINK TEMP AVAILABLE:**

PLEASE SELECT ONE:

- 165° 286°
 212° 360°

Bristolite® Daylighting Systems

401 East Goetz Avenue, Santa Ana, CA. 92707
 TEL 714.540.8950 / FAX 714.540.5415

CUSTOMER :

PROJECT :

PREPARED BY :

SUBMITTAL DATE :

JOB NO :

ARCHITECT :