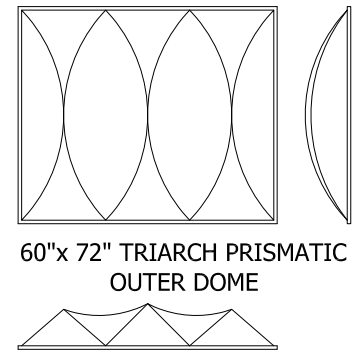
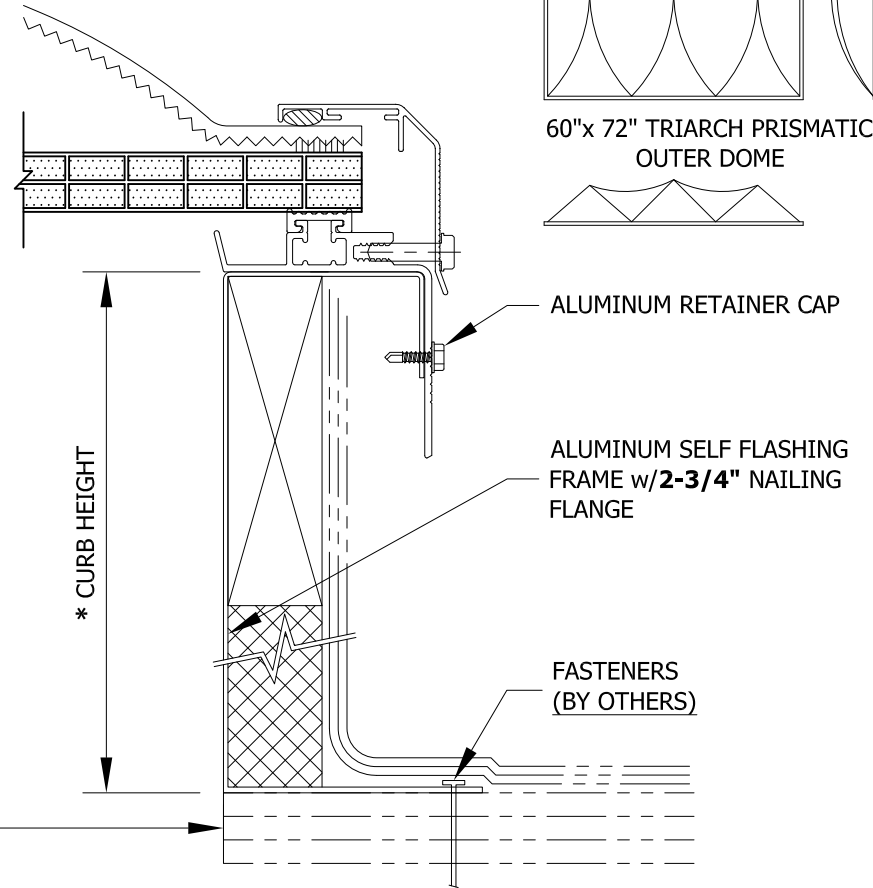
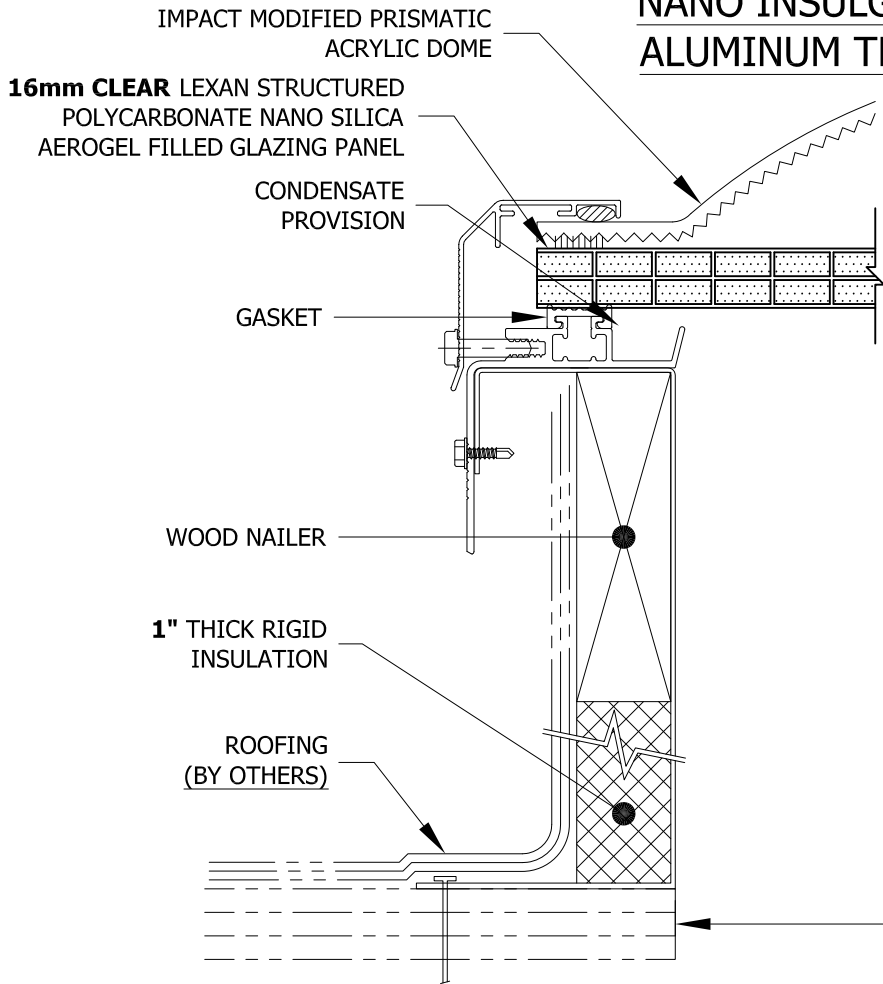


# NANO INSULGEL PRISMATIC / POLYCARBONATE ALUMINUM TRIARCH SELF FLASHING SKYLIGHT



60"x 72" TRIARCH PRISMATIC  
OUTER DOME

ROUGH OPENING  
DIMENSIONS

\* CURB HEIGHT

MODEL: ALI-SF-2-PM-16 mm NANO (NOT TO SCALE)		CURB HEIGHT ○ 9" ○ 12"		MODEL NUMBER	ROUGH OPENING DIMENSIONS	QTY	MODEL NUMBER	ROUGH OPENING DIMENSIONS	QTY	MODEL NUMBER	ROUGH OPENING DIMENSIONS	QTY
				SQUARE			RECTANGULAR			RECTANGULAR - (cont.)		
OUTER PRISMATIC COLOR		INSULGEL PANEL COLOR		1414 ALI-SF 14 1/4" x 14 1/4"			1422 ALI-SF 14 1/4" x 22 1/4"			3096 ALI-SF 30 1/4" x 96"		
○ CLEAR (CPM) ○ WHITE (WPM)		○ CLEAR (C) ○ WHITE (W)		1919 ALI-SF 19" x 19"			1446 ALI-SF 14 1/4" x 46 1/4"			3496 ALI-SF 34" x 96"		
○ OTHER:		○ OTHER:		2222 ALI-SF 22 1/4" x 22 1/4"			2230 ALI-SF 22 1/4" x 30 1/4"			3746 ALI-SF 37" x 46 1/4"		
				3030 ALI-SF 30 1/4" x 30 1/4"			2237 ALI-SF 22 1/4" x 37"			3775 ALI-SF 37" x 75"		
				3737 ALI-SF 37" x 37"			2246 ALI-SF 22 1/4" x 46 1/4"			3859 ALI-SF 38" x 59"		
				4242 ALI-SF 42" x 42"			2272 ALI-SF 22 1/4" x 72"			4669 ALI-SF 46 1/4" x 69 1/2"		
				4646 ALI-SF 46 1/4" x 46 1/4"			2296 ALI-SF 22 1/4" x 96"			4689 ALI-SF 46 1/4" x 89 1/2"		
				4848 ALI-SF 48" x 48"			3037 ALI-SF 30 1/4" x 37"			4896 ALI-SF 48" x 96"		
				5555 ALI-SF 55" x 55"			3046 ALI-SF 30 1/4" x 46 1/4"			5460 ALI-SF 50" x 60"		
				6060 ALI-SF 60" x 60"			3069 ALI-SF 30 1/4" x 69 1/2"			6072 ALI-SF 60" x 72"		

<b>Bristolite Daylighting Systems</b>  401 East Goetz Avenue, Santa Ana, CA. 92707 TEL 714.540.8950 / FAX 714.540.5415	CUSTOMER :	PREPARED BY :	JOB NO :
	PROJECT :	SUBMITTAL DATE :	SHEET NO.: